

CUT the ROPE™

CONNECT 4



Exclusive access!

Head over to
connectfour.com* and
enter the code below to
unlock a special Om Nom
adventure and more!

C416-2566-5536

*Ask an adult before going online.
Web site available for a limited time only.

AGES 6+

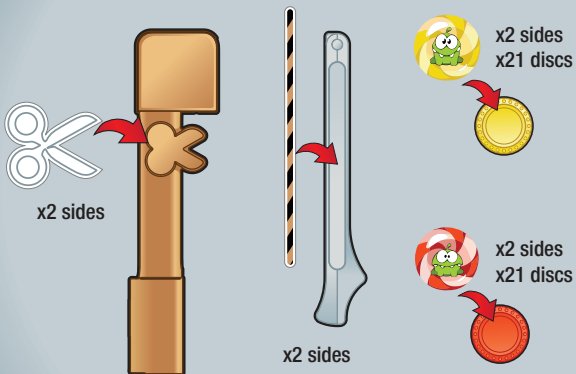
For 2 Players

ADULT ASSEMBLY REQUIRED.

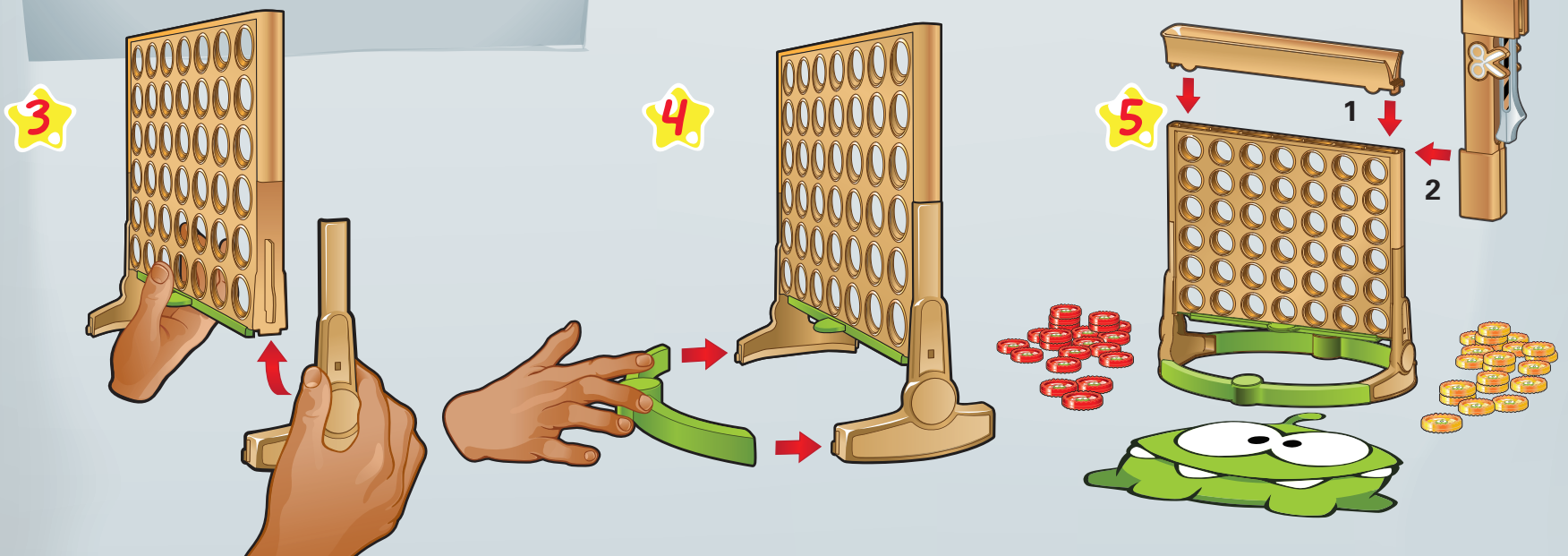
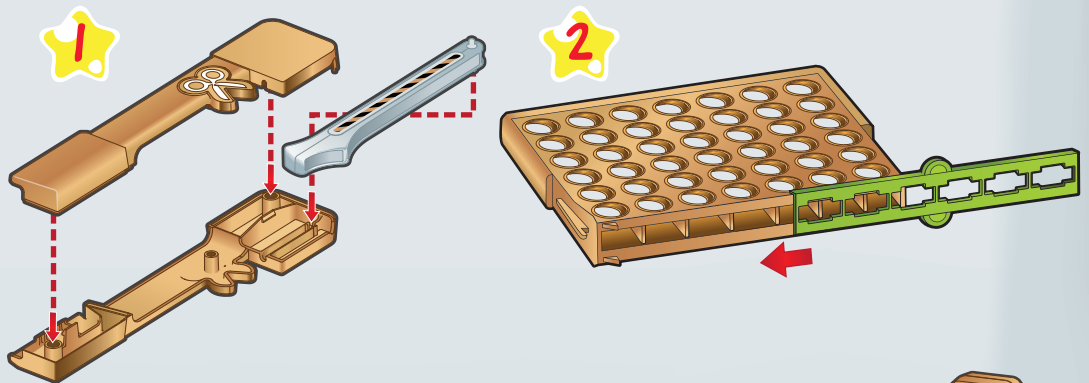
CONTENTS

- Game Grid • 21 Red Discs • 21 Gold Discs • 2 Legs • 2 Base Pieces
- Lever • Lever Housing • Funnel • 2 Label Sheets • Character Card

APPLY LABELS



ASSEMBLY

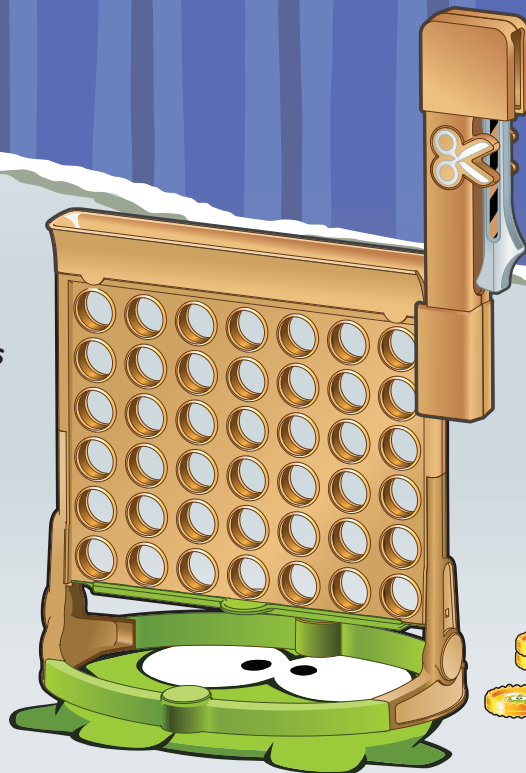


HOW TO WIN

Be the first to land
4-in-a-row.

SETUP

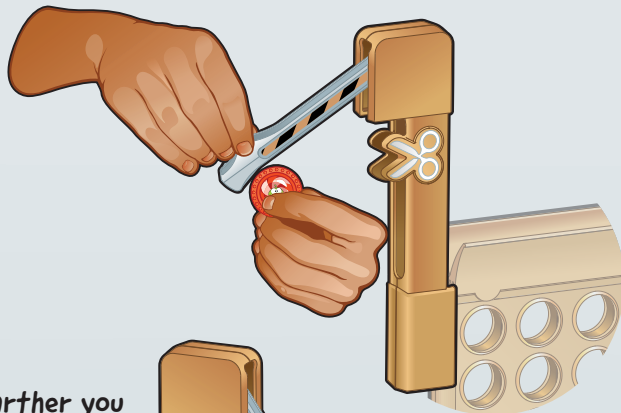
Put Om Nom under the grid.
One player takes the red discs
and the other player takes
the gold discs.



LET'S PLAY!

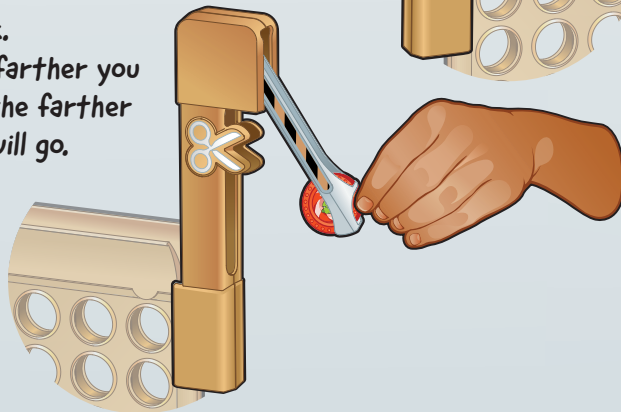
Red player goes first. On your turn:

1. Put disc in rope.



2. Pull back.

Note: The farther you
pull back, the farther
your disc will go.

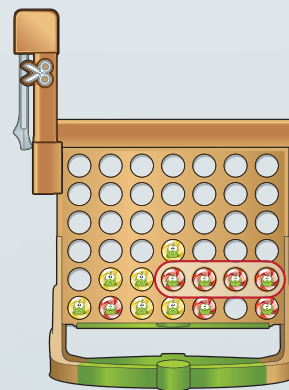


3. Let go!

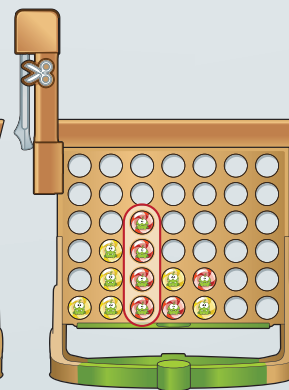
Note: If the disc doesn't land in the grid, try again.

4. Did you get 4-in-a-row? (You can make a row of
4 discs horizontally, vertically or diagonally.)

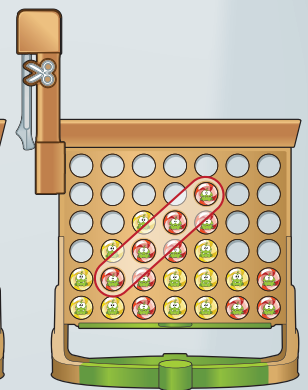
- Yes – You win!
- No – It's the next player's turn.



FOUR IN A ROW HORIZONTALLY



FOUR IN A ROW VERTICALLY



FOUR IN A ROW DIAGONALLY

ZeptoLab, Cut the Rope, Cut the Rope Experiments, Om Nom, and Feed with Candy are the trademarks or registered trademarks of ZeptoLab UK Ltd. © 2012. All rights reserved.

The HASBRO name and logo and CONNECT 4 are trademarks of Hasbro, © 2012 Hasbro, Pawtucket, RI 02861-1059 USA. All Rights Reserved. TM & © denote U.S. Trademarks.

Manufactured by: Hasbro SA, Route de Courroux 6, 2800 Delemont CH.

Represented by: Hasbro Europe, 2 Roundwood Ave, Stockley Park, Uxbridge, Middlesex, UB11 1AZ, UK.

A2083E180

101A208300



Consumer contact:

USA and Canada: Hasbro Games, Consumer Affairs Dept., P.O. Box 200, Pawtucket, RI 02861-1059 USA. ☎ 888-836-7025.

Hasbro Australia Ltd., Level 2, 37-41 Oxford Street, Epping, NSW 2121, Australia. ☎ 1300 138 697.

Hasbro NZ (a branch of Hasbro Australia Ltd.), 221 Albany Highway, Auckland, New Zealand. ☎ 0508 828 200.

Consumer Services:

Hasbro UK Ltd., PO Box 43 Newport NP19 4YD, UK. Tel 00800 22427276. Consumer_affairs@hasbro.co.uk www.hasbro.co.uk